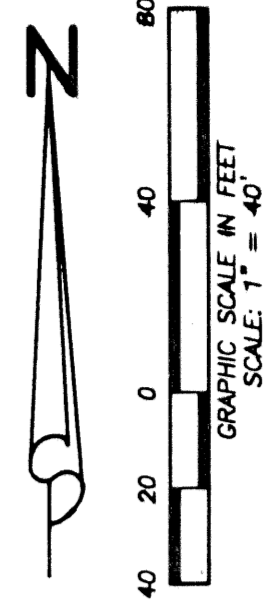
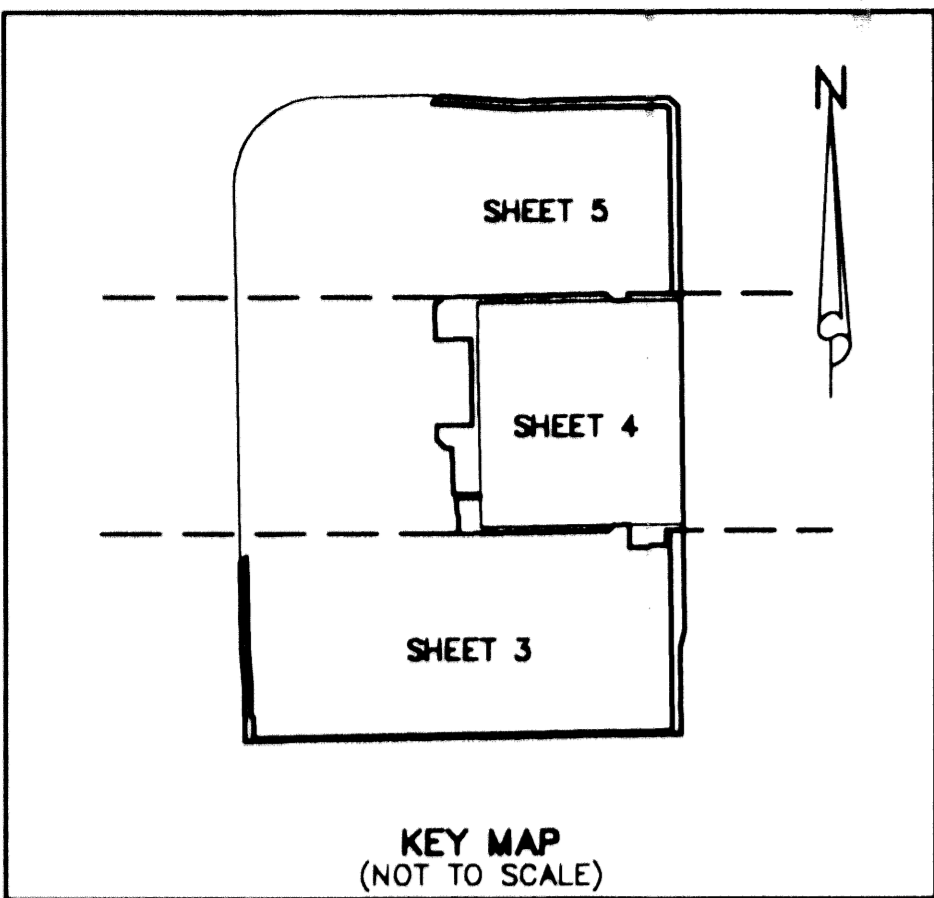


LESTER P.U.D. PLAT SIX

BEING A REPLAT OF TRACTS "I", "K", "M", "N", "R" AND LOTS 38, 44 AND 45 OF LESTER P.U.D.— PLAT FOUR, AS RECORDED IN PLAT BOOK 88, PAGES 126–131, PUBLIC RECORDS OF PALM BEACH COUNTY, FLORIDA, AND TRACTS "G", "J" AND LOTS 49 AND 108 OF LESTER P.U.D.— PLAT FIVE, AS RECORDED IN PLAT BOOK 88, PAGES 78–83, PUBLIC RECORDS OF PALM BEACH COUNTY, FLORIDA, AND A PORTION OF THE SOUTHEAST ONE-QUARTER (SE 1/4) OF SECTION 35, TOWNSHIP 45 SOUTH, RANGE 42 EAST, PALM BEACH COUNTY, FLORIDA.

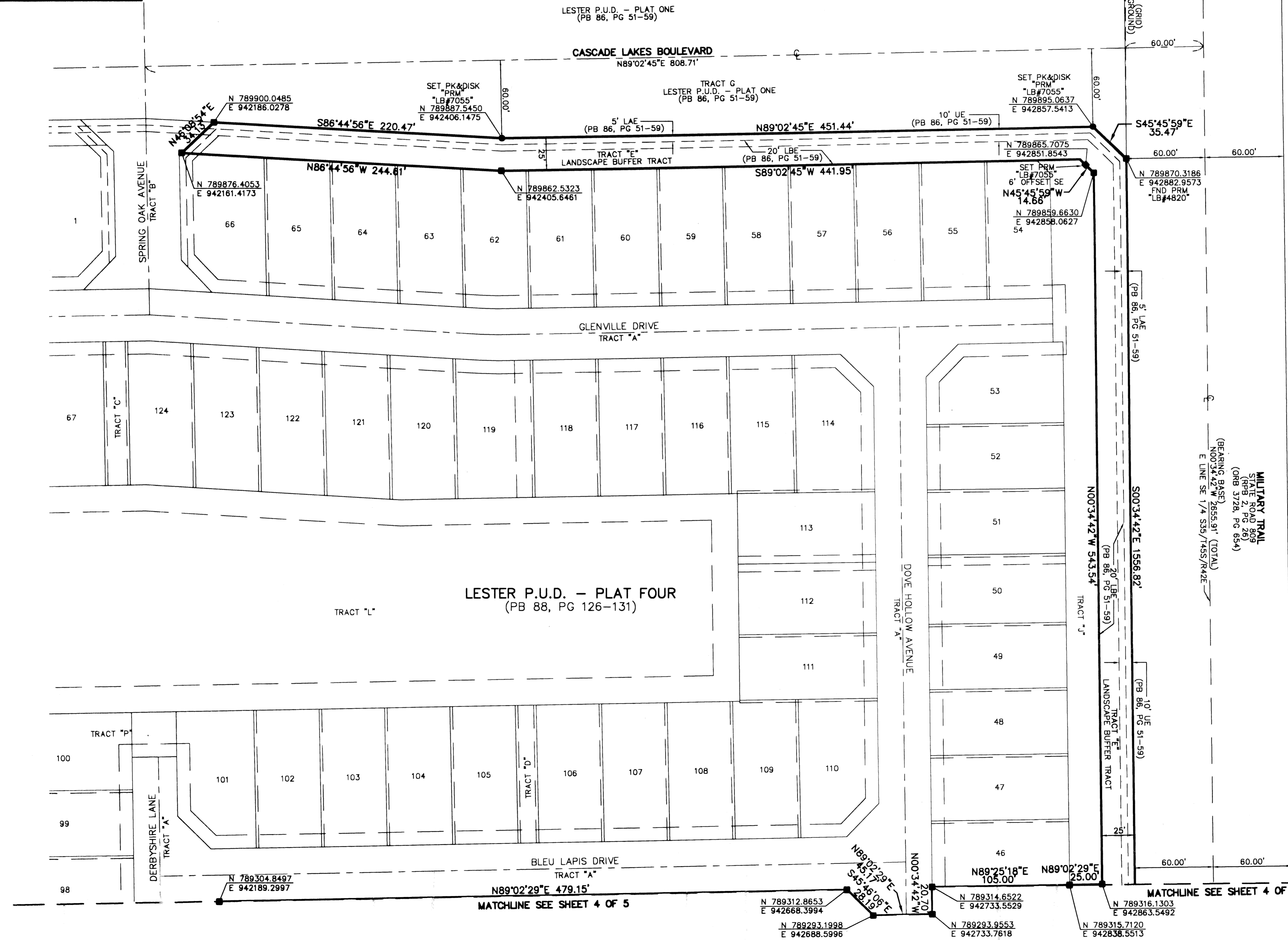
MAY, 2001 SHEET 5 OF 5



STATE OF FLORIDA } S.S.
COUNTY OF PALM BEACH }
THIS PLAT WAS FILED FOR RECORD AT _____ DAY OF _____, AD. 20____ AND DULY RECORDED IN PLAT BOOK _____ ON PAGES _____ AND _____.
DOROTHY H. WILKEN, CLERK
CIRCUIT COURT
BY: _____ DC

LEGEND:

- (C) = CALCULATED
- CMB = COMMISSIONERS' MINUTES BOOK
- DE = DRAINAGE EASEMENT
- DB = DEED BOOK
- FND = FOUND
- FPL = FLORIDA POWER & LIGHT
- IP = IRON PIPE
- IRC = IRON ROD WITH PLASTIC CAP
- LAE = LIMITED ACCESS EASEMENT
- LB = LICENSE BUSINESS
- LBE = LANDSCAPE BUFFER EASEMENT
- LME = LAKE MAINTENANCE EASEMENT
- LMAE = LAKE MAINTENANCE ACCESS EASEMENT
- LS = LICENSE SURVEYOR
- LWDD = LAKE WORTH DRAINAGE DISTRICT
- (M) = MEASURED
- MON = MONUMENT
- ORB = OFFICIAL RECORD BOOK
- (P) = PLAT
- PC = PLAT BOOK
- PG = PAGE(S)
- POB = POINT OF BEGINNING
- POC = POINT OF COMMENCEMENT
- PRM = PERMANENT REFERENCE MONUMENT
- RR = RADIAL TO REAR LOT LINE
- RF = RADIAL TO FRONT LOT LINE
- R/W = RIGHT-OF-WAY
- RPB = ROAD PLAT BOOK
- (S) = SURVEY
- UE = UTILITY EASEMENT
- ZLLME = ZERO LOT LINE MAINTENANCE EASEMENT
- © = SET PERMANENT CONTROL POINT (PCP)
- *LB#7055*
- = SET 4"x4" CONCRETE MONUMENT UNLESS OTHERWISE SHOWN



LESTER PUD PLAT 6
DATE: 10/20/00
JOB: 00-031B
DATE: 12/20/00
DWG: 00-022

FLD	RP/AB	FB	PC	JOB	DATE	DWG
				00-031B	12/20/00	00-022

Wantman Group, Inc.
 Engineering & Surveying & Mapping
 901 NORTHPOINT PARKWAY, SUITE 204
 WEST PALM BEACH, FL 33407
 (561) 687-2220 phone (561) 687-1110 fax
 CERT No. 6091 - LB No. 7055